



PRODUKT <ATALOG



ODIN TARGET

Shooting Range Technology since 1917

CONTACT

Sales
Representative
Ottawa

Sales
Representative
Phoenix

Development, Procurement and Administration
Spantgatan 2C, 973 46 Luleå, Sweden.

Head Office, Sales and Showroom
Järfällavägen 104, 177 41 Järfälla, Sweden.

Sales
Representative
Warsaw

Sales
Representative
Riyadh

For contact information
please go to odintarget.com

TARGET TECHNOLOGY SINCE 1917



Odin Target specializes in cutting-edge indoor and outdoor shooting ranges for law enforcement, military, and private sector.

Odin Target's shooting range system is unique in design, function, and adaptability. Together with our partners, we deliver turnkey solutions all the way from design and construction to inspected facilities ready to use.

In Norse mythology, Odin was revered as the Allfather who sacrificed one of his eyes to know all things in the realms of gods and men. Yet, he was also a warrior feared by his enemies for his bravery on the battlefield and his willingness to fight for what he believed in. This duality made him God of both war and wisdom. Today we carry on that tradition as we combine technological development with the tactical capability to produce the most sophisticated shooting ranges on the global market. We design and assemble all core products in-house, and as a complete contractor and supplier, we can meet any demand for customized solutions or wholesale orders.

Our company was founded within the walls of a mechanical workshop that dates back to 1917. Initially, we were solely focused on developing shooting ranges and equipment for special forces units within Swedish law enforcement and military

sectors. For the past 20 years, we have operated as an independent company and the collaboration with the special forces continues on to this day as we develop new products to meet their unique demands.

Our history of technological advancement in product development makes our Shooting Range Solutions unique in design, function, and adaptability. In addition to the technologies we have developed for the shooting range, we have also focused on safety, shooter experience and environmental sustainability. This is why the air quality and working environment at our shooting ranges are significantly better than any other shooting range on the market.

Over 100 years of continuous development and a millennia of inherited Viking warrior wisdom have led us to this point. Now we proudly offer our products and services worldwide.

HIGHEST CREDITWORTHINESS
ODIN TARGET AB
556922-1392 | 2023-03-26



NORDIC GROWTH COMPANY
ODIN TARGET AB
556922-1392 | 2021 DECEMBER



COMPLETE SHOOTING RANGE



From design and construction all the way to inspected facilities ready to use

Odin Target Shooting Ranges are the most sophisticated shooting ranges on the market today. We construct both conventional single-direction shooting ranges and tactical shooting ranges with up to 270° shooting capability for advanced training scenarios. Every shooting range can also be tailored for a specific location or to suit your specific needs. We are a complete contractor for both indoor and outdoor shooting ranges and we design and assemble all core products in-house.

We hold several patents for the design and function of our unique Svalin Bullet Trap and Target Systems. Our unique design makes the shooting range both safe and environmentally friendly while also offering a world-class shooting experience.

We handle everything from design and construction all the way to inspected facilities ready to use. As a complete contractor, we guarantee that every single aspect of the shooting range meets the Odin Target standard for safety, quality, and durability.

World-Class Working Environment

A high-quality working environment ensures that the shooting range can be used for longer periods of time and that the health-risks normally associated with shooting ranges can be reduced to zero. Our shooting ranges offer the following features to ensure a world-class working environment.

- High-quality ventilation system – removes harmful particles from the air inside the shooting range. The air then goes through a HEPA filter before it is let out into the atmosphere so that no lead or gunpowder residue is released.
- Automatic lead dust and bullet residue clearing system – with our patented negative-pressure system inside the bullet trap, the lead dust from the impact is cleared out automatically. The bullet shrapnel is then collected, making it possible to recycle the metals from the bullets.

- Noise Canceling Facility Design – one of the biggest work environment problems aside from air quality is the sound pollution from the firearms. As a result of the design of our shooting ranges, the harmful noise from a fired gun or rifle is filtered away in the same manner as an echo is filtered from a sound studio. The noise canceling system also trains shooters to quickly identify threats.

- Tactical Shooting Range Floor Design – the floor in our shooting ranges is specially designed to enable tactical maneuvering and training. The softened material will both soften the impact and make it possible to perform repeated maneuvers with a significant decrease in risk for injury. At the same time, the floors are strong enough to drive an armored car that weighs up to 8 metric tons inside the range.

- The patented design of the Svalin Bullet Trap completely eliminates ricochets from the side. This allows instructors and observers to move around freely behind the line of fire without any risk of harm or injury.



Low Maintenance

Odin Target Shooting Ranges are designed to withstand day-to-day tactical training by military and special forces using automatic rifles with ammunition up to caliber 7.62. This means that the shooting range can be used over long periods of time without shutting down for maintenance or cleaning of the bullet traps. That means less downtime and more active training.

The shooting range is designed with an automatic clearing system inside the bullet trap that continuously removes all bullet fragments and splinters from the bullet trap and stores them in a container. The lead from the container can then be collected and recycled. The target surface of the bullet trap is also covered with a self-healing ballistic screen that reseals once a projectile has passed through.

In the service agreement, we also offer inspection of the facilities two times annually to make sure that the security arrangements are up to date in all parts of the facilities including software updates and replacements of consumables.

Advanced Distraction System

We offer the possibility to install a fully integrated state-of-the-art audiovisual distraction system in all our shooting ranges. The system includes a combination of built-in light panels, a powerful sound system, smoke machines, and a projector-based simulation-training system. The built-in light panels can recreate any time of day from bright sunlight to dusk or pitch

black with strobing blue lights recreating the environment of an emergency situation at night. This distraction system allows you to create a wide number of scenarios for training tactical situations and all distractions can be managed from any tablet with our custom software or from our Wireless Control Station.

The distraction systems can be tailored to meet any demand, so please feel free to state your needs at the consultation.

Integrated Simulation Training System

A projection-based Simulation Training System allows you to practice true-to-life scenarios with multiple-choice situations. In our live-fire facilities, the simulation system turns the shooting range into an exceptional training experience, suitable for every need and adaptable to almost any scenario. The technology is based on a vivid HD projection system with a live-action feel and function, including bullet tracking sensors making every scenario an exceptional training experience. The scenarios comprise prerecorded situations where actors play out a number of scenes with multiple outcomes. It is then up to the shooter to judge the situation and take the best decision possible in a stressful but safe environment. The system can also be used with blank ammunition where the laser system registers every hit. This makes the Simulation Training System suitable for all skill levels and adaptable for individual customer needs—all while focusing on the “train-as-you-fight” core principles.

TECHNICAL SPECIFICATION

Air Exchange: 20 times per hour / every 3 minutes

Filters: 3-stage filtrating system, HEPA

Inlet: Air Wall with laminar air flow

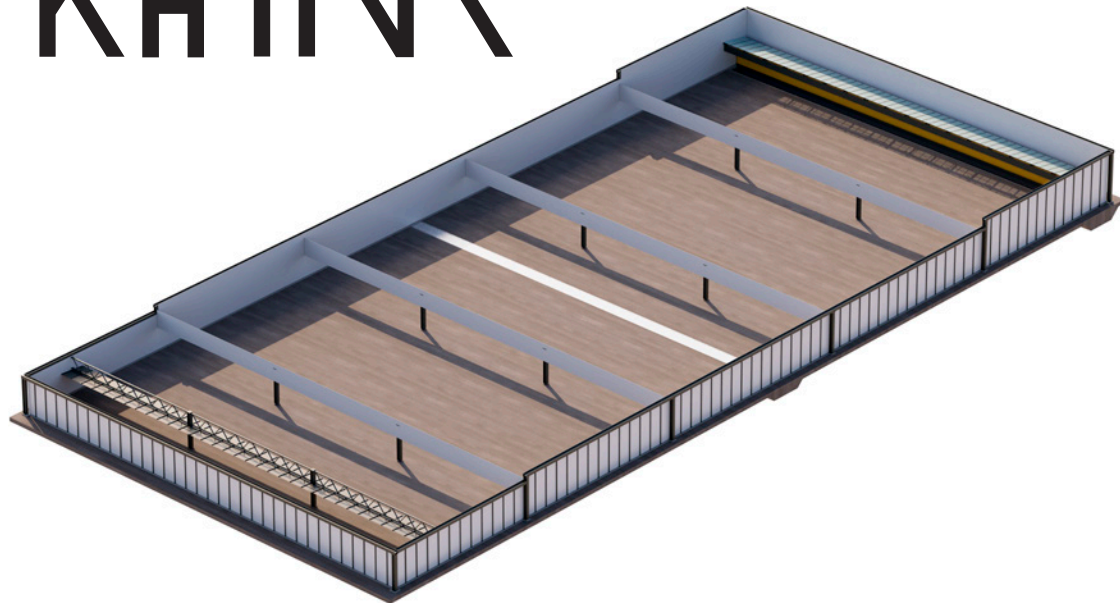
Outlet: Multiple in ceiling and bullet trap

Other features: Heating/Cooling

Separate outlet system for range and bullet trap



TACTICAL OUTDOOR RANGE



In our Outdoor Shooting Ranges, we have used our verified technology for indoor ranges, weatherproofed it, and taken it outside. The combination of Odin Target patented technologies results in a 270° safe, and environmentally friendly shooting range. Our efforts to keep shooters safe and decrease pollution to an absolute minimum have resulted in the most advanced outdoor shooting range on the market.

All targets and other equipment from our indoor shooting ranges can be brought out and installed in our Outdoor Shooting Range. This means that the outdoor range can be customized to suit your needs in the same unique way as our indoor ranges. We also offer a wide range of targets especially designed for outdoor use.

Our Outdoor range arrives at the site in prefabricated modules that are assembled without any welding techniques. Due to this technology, every single part of the range can be replaced if needed. Moreover, if the range for any reason has to be relocated, the entire shooting range can be dismantled, transported, and reassembled in the new location in a matter of weeks.

Training

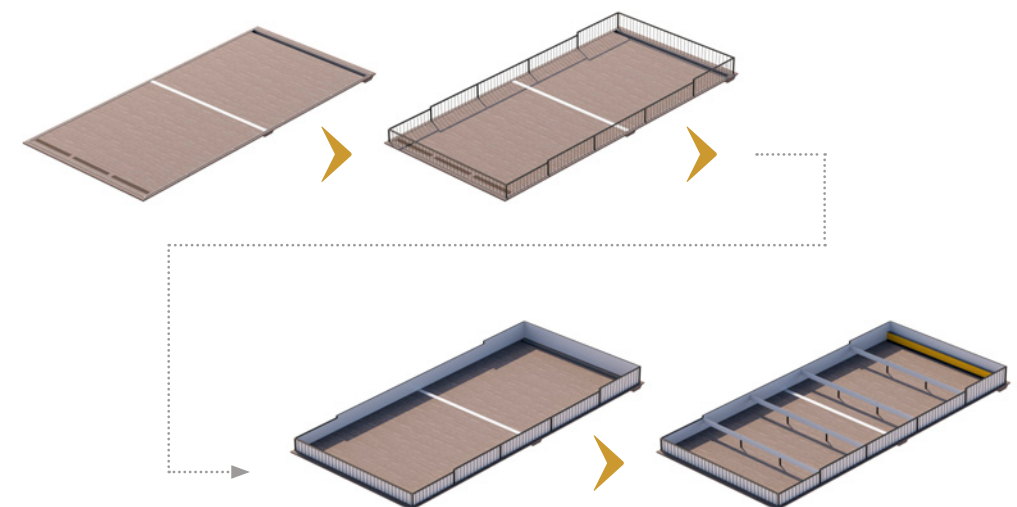
All training of instructors in handling target systems and bullet traps is done

in consultation with the client and is completed after all functional tests have been completed.

A review and training with property managers or the equivalent are done in the target system and the bullet trap functions and maintenance points in connection with the submission of final documentation for the plant.

Documentation, consumables, and spare parts

Documentation of suitable spare parts and consumables will be handed over. A list of item numbers and designations will be produced. Service agreements can be included in the delivery. Complete and updated documentation will be handed over after the shooting range is approved and delivered.





SVALIN

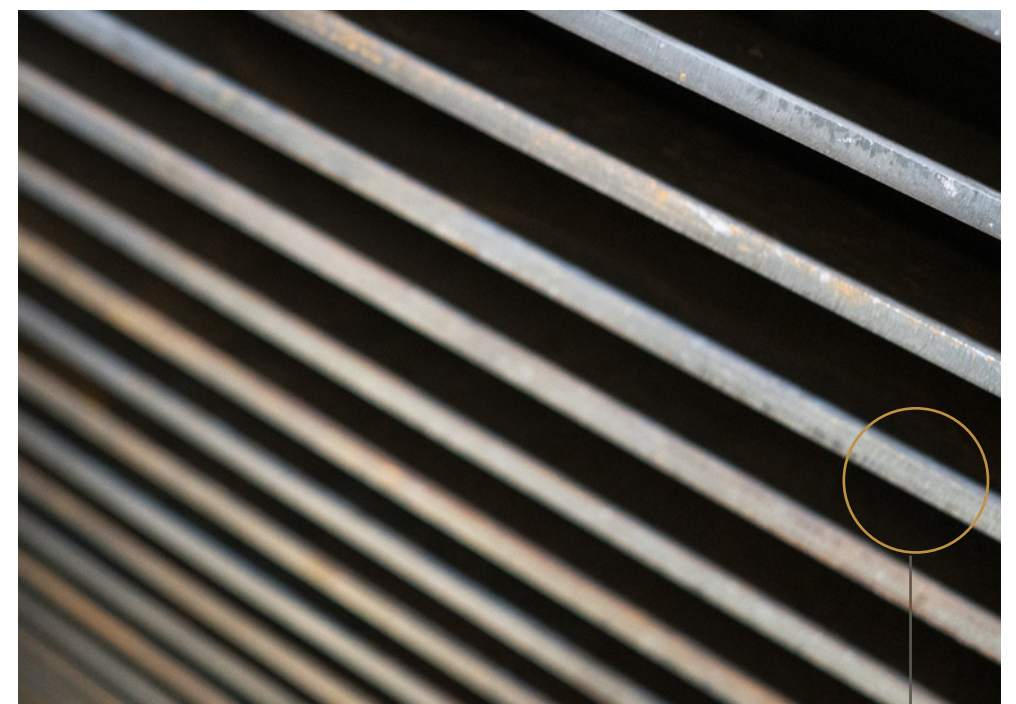
**Svalin Environmentally Friendly Bullet Trap
is our patented bullet trap.**

The unique design lays the foundation for our shooting ranges with unique possibilities and a world-class working environment. Svalin is designed to withstand day-to-day training with automatic rifles with up to caliber 7.62 and has been tested to endure hits with up to caliber .50.

The Svalin Bullet Trap is based on the reduction of kinetic energy. The design forces projectiles to change direction multiple times until it comes to a complete stop. The projectile then drops down to an automatic conveyer belt that transports the shrapnel away from the wall and collects it for recycling.

The surface of the Bullet Trap is covered with a rubber shield with a tensile elongation of 700%. This makes the rubber reseal after the projectile has passed through so that no splinter or dust is remitted back into the shooting area. All fragments and lead dust are then dispersed by our Unique Clearing System (read more below). The Bullet Trap also has a protective steel shield in the front, covered by a recyclable plastic material to protect from ricochets.

The patented design of the Svalin Bullet Trap allows a shallow installation depth of only 600 mm, permitting maximum shooting capability in any facility.



"The steel components of the bullet trap are designed to withstand at least 1 000 000 projectiles per m²."



"The patented design of Svalin bullet trap makes for a shallow installation depth of only 700 mm, allowing maximum shooting distances in any facility."

Unique Clearing System

The bullet trap has a ventilation system that prevents fragments and dust from reentering the room where the shooters



The lead residue from the bullets is cleared away collected automatically.

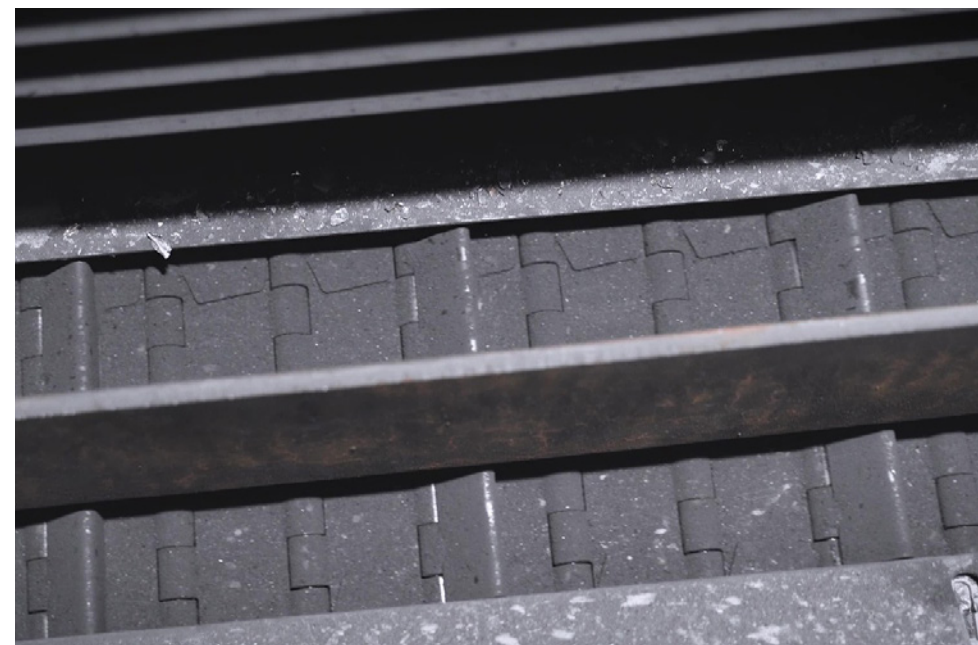
are. The ventilation has a system of filters in three stages that enables the outgoing air to be recycled in the main buildings existing ventilation.

The scrap conveyer and the ventilation system are activated by an acoustic sensor which reacts when the shooting begins. They are then deactivated by a timer that can be set to 10-20 minutes after the last shot is fired.

Low Maintenance

The steel components of the bullet trap are designed to withstand minimum 950 000 projectiles per m² without maintenance which means that the steel parts of the bullet trap under normal operation should be free of maintenance for more than 10 years. The bullet trap can withstand all types of ammunition up to caliber .50, except projectiles with armor-piercing shells (AP).

The rubber shields that protect from splinters are easy to replace when necessary. This can be done by regular staff at the shooting range.



Scrap conveyer belt that transports the bullet residues to a container



The bullet trap has a ventilation system that prevents splinters and dust from the projectiles to enter the shooting range.

Sound Proofing

The Svalin Bullet Trap is placed on polymeric cushions that prevent all vibrations and sounds from the bullet trap from leaking into the body of the building, making the bullet trap completely separate from the building in which it is placed.

The only thing to consider is the sound of the weapon when it is discharged, the rest will be taken care of by the bullet trap.

Adaptability And Function

The Bullet Trap is designed to cover all three walls in the shooting direction. The steel protection shields in front of the target system and the lower parts of the bullet trap are protected by a plastic shield.

The steel slats inside the bullet trap are attached to mounting poles in the rear wall of the bullet trap. The steel slats are pressed into the pole and no welding is used. In this way, the steel slat may be moved and adjusted to ensure evenly distributed wear over time.

The ventilation inside the bullet trap is based on a constant vacuum that is measured by a sensor and results in a constant airflow through the bullet trap. The lead dust is then caught in a three-stage filter system. No dust will leak into the room where the shooters are. That is

true even if the ballistic rubber shield is torn with visible holes. The noise from the bullet trap cabin is negligible. When measuring noise in existing shooting ranges the main part of the noise originates from the general ventilation of the room.

TECHNICAL SPECIFICATION

Size: 60 cm deep, height and width can be customized to the project requirements.

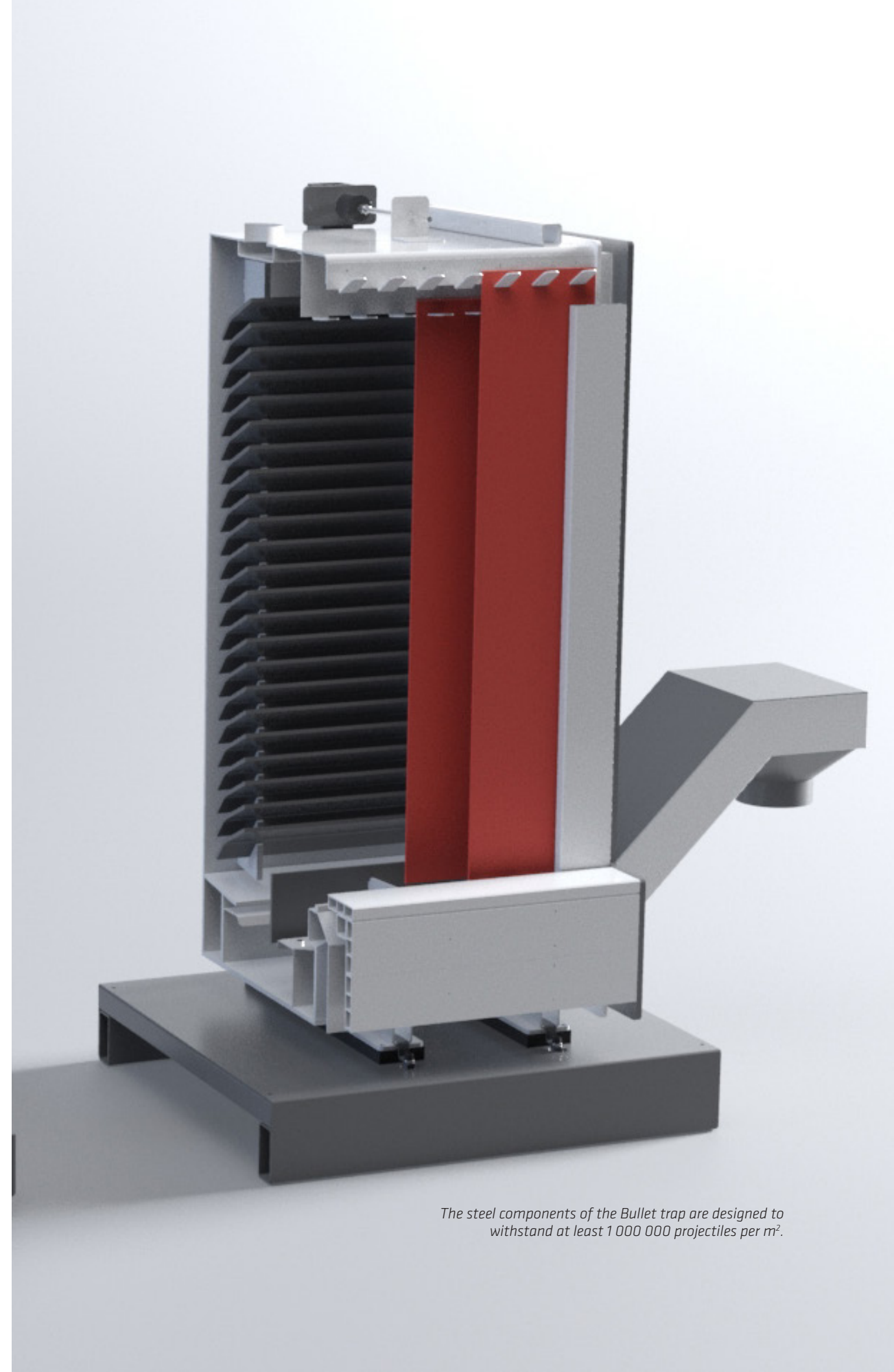
Safety limits: 15-160 degrees shooting angle, 0 meters, "point-blank" distance

Supported calibers: up to .50 B.M.G. (12.7mm), FMJ.

Other features: Automatic Cleaning System, maintenance free.

Warranty: 10 years of maintenance-free work*

*Limited warranty depending on annual rate of fire, does not apply to consumables



The steel components of the Bullet trap are designed to withstand at least 1 000 000 projectiles per m².



MOVING TARGETS

These are our Moving Target Systems that often are installed as the everyday targets in our shooting ranges. They are designed with the same platform and can therefore be combined to create a wider range of possible training scenarios. These target systems are always in stock and can be delivered worldwide with short notice. In addition to our standard target systems, we also offer the possibility to design custom solutions with any form or function that would suit your needs.

LOKE 180

TURNING TARGET SYSTEM

Item Number: 500996

Loke 180 is a system of intelligent rotating targets. The targets have one friendly and one hostile side and can be combined to create realistic situations where the shooter will improve both reaction time and target identification abilities.

The targets are virtually soundless, and the rotation takes only 0.2 seconds. This is made possible because Loke 180 is powered by a 24V circuit and does not use pneumatics anywhere in the system. The targets are managed from a Wireless Control Station and can be controlled either individually or in groups, including randomized patterns. This gives the

instructor a wide range of possibilities to create complex scenarios for shooters of any skill level. The Loke 180 works with most types of weapons; for example, pistols, shotguns, assault rifles, and sniper rifles and the system can be installed on the ground or on the rail and can be used with any paper, cardboard, or plastic target.



Loke 180 is controlled from a wireless station with easy-to-use software. The targets can be turned in groups or individually. The programming unit is wireless, and a wireless remote control is included.



The turning rotation takes less than 0.2 seconds and each target can be controlled in groups or individually.

Built-in Lighting

Loke 180 also has built-in LED lights that can illuminate targets individually or in groups. The lights can be changed between four different colors to, for example, indicate friend to foe when the target is presented. This provides the ability to practice live-action decision-making and more realistic train-as-you-fight scenarios.

Hit Sensors

Loke 180 can be equipped with hit sensors that can register up to 9 hits with the added function of turning the target away when the preset number of hits is reached.

TECHNICAL SPECIFICATION

Size: L200 W130 H130 mm
Weight: 2kg
Supported calibers: All
Power supply: 24V, wired and/or battery

Communication: Wireless
Other features: Optional Location of Hit or Miss system, 4 different color lights to light up the target
Warranty: 60 months

TARGET RETRIEVAL SYSTEM



BASIC

Basic Target Retrieval was designed for the highest comfort and safety at the ranges. Built with high-quality components, focusing on functionality and durability. Basic Retrieval has been equipped with

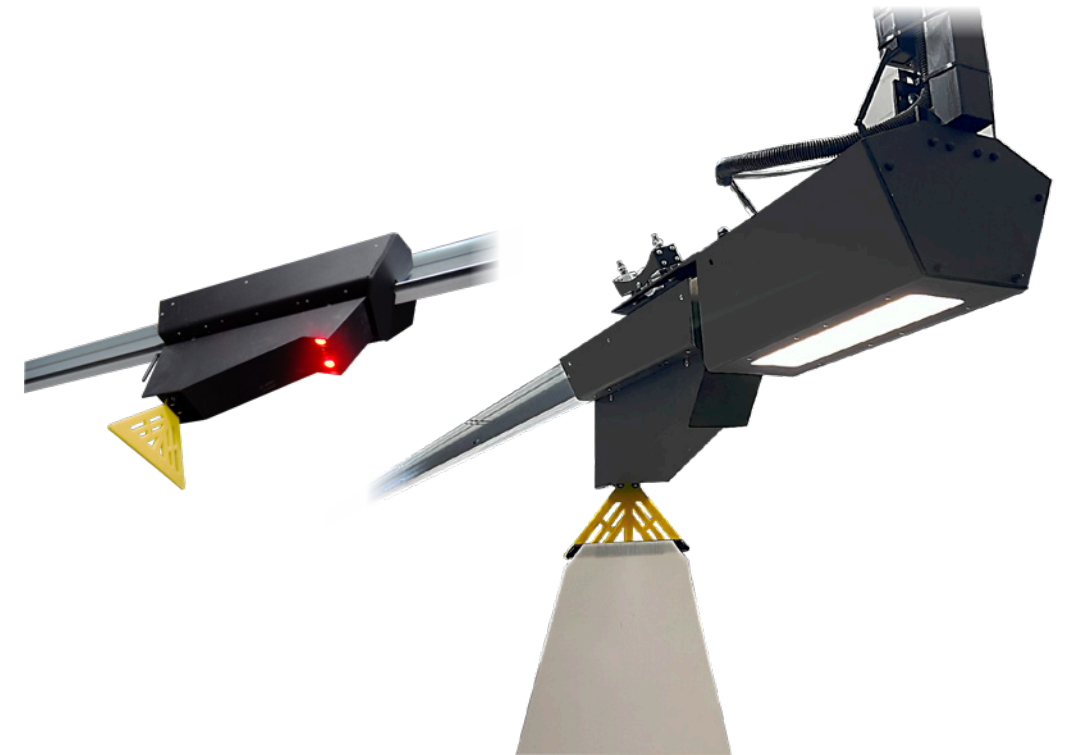
ballistic protection to enhance the resistance to unintended hits and ricochets. The retrieval system's outlook perfectly fits in the modern ranges.

- Basic Target retrieval system for indoor shooting ranges
- Equipped with cover to minimize the risk of damage
- Powered by durable synthetic cable
- Non-ricochet target hanging system
- Modular rail system to ease the repair
- Can operate individually or in group
- Can operate based on scenarios
- Parameters adjustable even when moving:
 - Speed
 - Distance

TECHNICAL SPECIFICATION

Speed: up to 3.5 m/s
Power: 240V AC, ~1.1A
Communication: Wireless

Operation temperature: -20°C to +45°C
Warranty: 60 months



PREMIUM

Premium Cordless Target Retrieval was designed for the highest comfort and safety at the ranges. It guarantees a reach variety of possibilities. Built with high-quality components, focusing on functionality and durability. Premium has been equipped with ballistic protection to enhance the resistance to unintended

hits and ricochets. The retrieval system's outlook perfectly fits in the modern ranges.

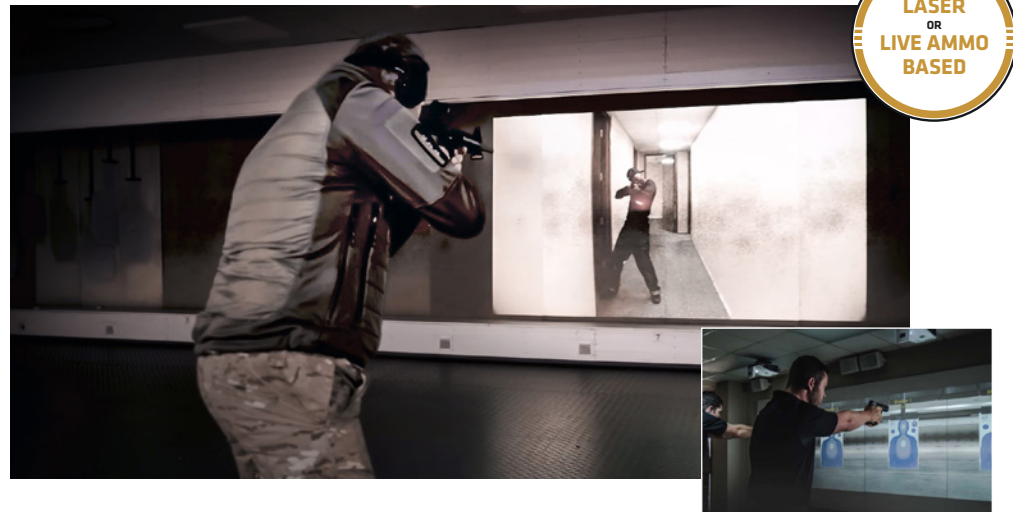
Configurability and additional features such as turning target, target hit detection, RGB target illumination, and real-time hits preview camera takes the training out of the box.

- Equipped with ballistic covers to minimize risk of damage
- Main features: 720 degrees (360 each way) turning system, target illumination, built-in camera for target preview, target hit detection, magnetic target holder
- Can operate individually or in group
- Can operate based on shooting scenarios
- Adjustable parameters (also when in operation): speed, distance, brightness, strobe, color of the target's illumination, target's turning angle (friend, enemy, any)
- Powered with: 230V AC
- Power: 200W

TECHNICAL SPECIFICATION

Speed: up to 3.5 m/s
Power: 240V AC, ~1.1A, 200W, Battery
Communication: Wireless

Operation temperature: -20°C to +45°C
Warranty: 60 months



SIMULATION TRAINING SYSTEM

Our Simulation Training System is designed to enhance shooting practice on every level. It can be used to learn safety rules and fundamentals. Law enforcement officers, military personnel, and sport shooters can all benefit from building up their shooting skills, such as speed, muscle memory, hand-eye coordination, peripheral vision, and more.

Simulators can be delivered in two versions:

LASER BASED – IR detection camera that detects the virtual shots on the screen. This 100% safe trainer will prepare shooters for the live shooting at the gun range. It is a perfect solution to reduce costs or for the units without live fire range.

With our video-based scenarios, shooters will experience realistic situations to practice split-second decision-making, reaction, and stress handling. When interacting with the scenario, shooters are constantly asked to make assessments about what action is the most appropriate action – verbal, non-lethal, or lethal – that should be used.

LIVE AMMO – this solution uses all the simulations from the virtual range but allows for practice with live ammunition. This solution will take the training to the next level and the training scenarios are virtually unlimited.

The live Ammo system uses a thermal camera to detect projectiles penetrating the Svalin Bullet Trap rubber shield.

EVERY SYSTEM CONTAINS:

High-quality Projector
High-performance Computer
Detection Camera – IR or Thermal

All systems are delivered with appropriate courseware matching the customer needs and choice of training weapons.



RANGE LED LIGHT

Range light was designed to assure safety and comfort at the range. It was built with high-quality components, focused on heat removal to enhance the quality and life span of the LED diodes. The Range Light was closed with an extremely small casing, only 60mm tall, which makes it extremely easy to fit in any range. It can be equipped with 1 to 5 diodes, allowing it to meet

individual requirements. LED technology lowers maintenance costs.

Range light can be used as a part of the training scenario, illuminating only specific targets, specific shooting stalls, transitioning the lightning, or simulating the low light condition effects: shots, explosions, strobes, or lightning.

- Based on LED technology
- Control electronics based on microcontroller and current control
- High luminous efficiency and stream of LED diodes
- Fully compatible with RangeTech Master control system
- Adjustable parameters:
 - Brightness
 - Strobe frequency
 - Strobe flash time
- Every diode can be controlled individually
- Can operate individually or in groups
- Can operate based on training scenarios
- Built with high-quality materials, mainly aluminum

** Please note:*

Requires DC power supply, ~36 Volts with regulation. Not included.

Type	Power (W)	Stream	CRI	LED
1 LED	37,5	4 700	>75	2828 COB LED
2 LED	75	9 500	>75	2829 COB LED
3 LED	112,5	14 300	>75	2830 COB LED
4 LED	150	19 000	>75	2831 COB LED
5 LED	187,5	23 800	>75	2832 COB LED

TECHNICAL SPECIFICATION

LED Voltage: 31-38V
Light temp.: 5 000K



Example of an equivalent facility in Sweden where also LOKE 180 and Running Man and fragment conveyor are included.

RUNNING MAN

MOVING TARGET SYSTEM

Item Number: 500922

The Running Man system has been developed together with the intelligent target practice system Loke 180. With all targets individually programmed at speeds ranging from 3 to 12.5 km/h, you can create the training situations you have always wanted. Do you want to have your targets sneaking up, walking, or running? No problem. With the Running Man system, the possibilities are endless.

Unlike most similar systems, Running Man does not use pneumatics. The 24V electronic system makes it virtually soundless. With the help of a PC or tablet computer, you can easily control each target individually. The easy-to-use Microsoft-based software gives you endless possibilities to create the scenarios you have always wanted. For example, you can program the system to change direction, accelerate or decelerate.

Together with Loke 180's turning targets and walls, you can create a situation where a target walks in behind a wall. Seconds later a non-target comes running out from behind the same wall. This will train the shooter in making split-second decisions and identifying threats. A lighting system can illuminate the targets or generate a flashing red light when a non-target gets shot.

TECHNICAL SPECIFICATION

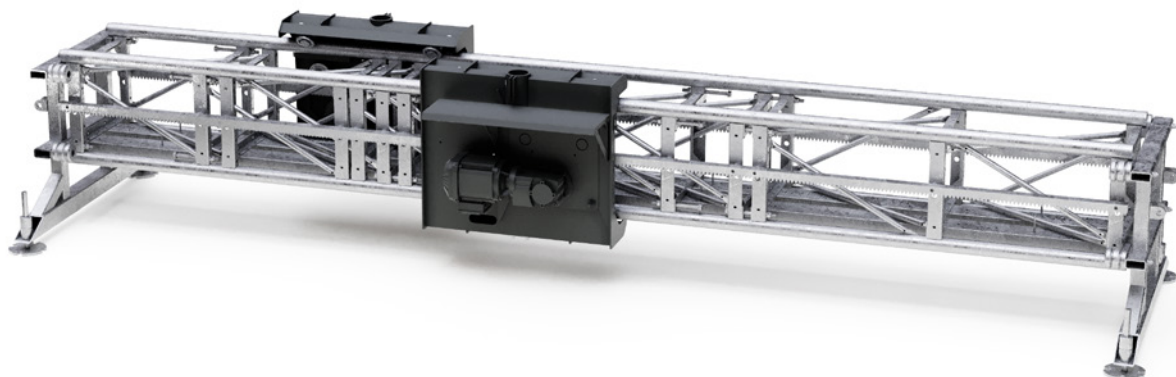
Size: L200 W130 H140 mm
Weight: 2,5 kg
Speed: 3 to 12.5 km/h
Supported calibers: All



Hit sensors

The targets can be equipped with sensors, making them fall after receiving a pre-set number of hits ranging from 1 to 9. The rails can be mounted either on the ceiling or on the floor.

Power supply: 24V, wired and/or battery
Communication: Wireless
Other features: Optional Location of Hit or Miss system
Warranty: 24 months



SLEIPNER

Sleipner heavy target carrier has been developed in cooperation with the Swedish military special forces. It is designed for simplicity, reliability, and stability and can withstand all conceivable weather conditions, from -40c to extreme heat up to +50c including blizzards or heavy rain.

Sleipner can be equipped with either our more advanced electronic targets or simple heavy dummies of troops, vehicles, tanks, or other armored targets. The system has no advanced controls and is easily operated with a modern handset. The

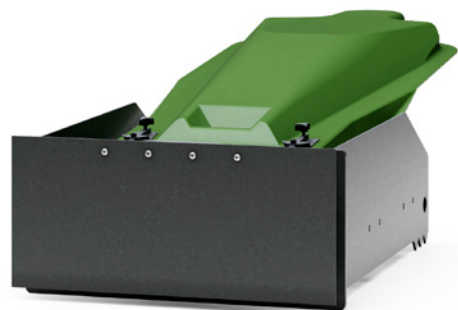
system has both manual and automatic mode, and can operate at speeds from 0-20 km/h. The advantage of the simple solution is that it is durable and easy to operate. The system is installed in sections that can be combined to fit any facility or terrain.

TECHNICAL SPECIFICATION

Weight: 30kg/m
Speed: 0 to 20 km/h
Supported calibers: All
Power supply: 400V

Communication: Wireless
Other features: Optional Location of Hit or Miss system
Warranty: 60 months





VIKING

Viking is an electronic pop-up target. It is fully programmable to create practices matching customers' needs.

The instructor can set features like: Stand-up time, delay time, face time, and number of hits required to the target to fall. Viking can be controlled individually or in groups. Thanks to advanced power supply, it can be fixed in a position or used as a portable target. Target will lay down after 1 to 9 hits. Viking can also be equipped with the Location of Hit or Miss system and the result of a shot is shown on the monitor at



the instructor station or shooter station.

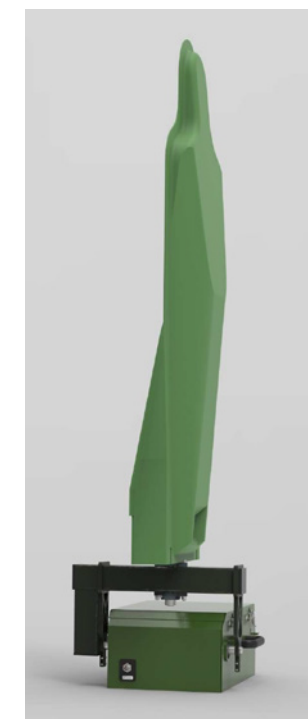
The target can also be used as a stand-alone unit. The integrated battery power supply and lightweight design make both mobile and practical. This way the target can be placed in the terrain for various training scenarios.

All the Odin Target targets can be controlled from a single Operator Station.

TECHNICAL SPECIFICATION

Size: L350 W350 H 150mm
Weight: 10kg
Safety limits: No
Supported calibers: All

Power supply: 24V, wired and/or battery
Communication: Wireless
Other features: Optional Location of Hit or Miss system
Warranty: 60 months

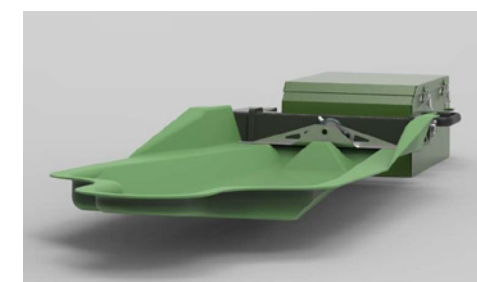


VIKING 180

Viking 180 is an electronic rotating pop-up target. It is fully programmable to create practice matching customers' needs.

The instructor can set such a feature like: Stand-up time, delay time, face time, and number of hits required to "kill" the target.

Viking can be controlled individually or in groups. Thanks to advanced power supply, it can be fixed in a position or used as a portable target. Target will lay down after



1 to 9 hits. If detailed feedback is needed, Viking can be equipped with the Location Of Miss And Hit system, and the result of a shot is shown on the monitor at the instructor station or the shooter's station.

All the Odin Target targets can be controlled from a single Operator Station.

TECHNICAL SPECIFICATION

Size: L450 W275 H175 mm
Weight: 19 kg
Power: 24V DC
Communication: Wireless

Other features: Location Of Miss And Hit system
Raise and Turn: 0,7s
Turn: ±90° within 0,4s
Warranty: 60 months



BALDER

Balder is a moving target equipped with two pop-up steel targets (one friend and one foe) alternating between the left and right shoulder of the main target. The targets fall when hit and the cycle continues.

The target can be used for reaction practice, hostage situation training, target identification, and precise shooting drills.

The target can be handled by wireless control from the operating station, manually or in scenarios. It can also work individually or in groups of several Balder targets.

The pop-up target can rotate behind the torso and alternate between right and left shoulder.



The pop-up unit can also be used separately from the mounting pole and steel torso. The pop-up target can for instance be mounted in windows or door openings in scenario training facilities.

All Odin Target targets can be controlled from a single Operating Station.

TECHNICAL SPECIFICATION

Height: 178 cm
Weight: 90 kg
Safety limits: No
Supported calibers: All

Power supply: 24V, wired and/or battery
Communication: Wireless
Warranty: 60 months

REACTIVE INDOOR TARGETS

The indoor targets are durable, splinter-free, and recyclable.



Plate Rack
Pistol, art nr 111208



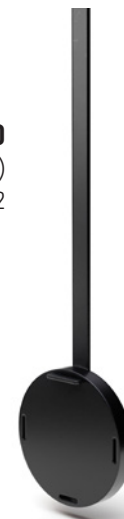
Hanging Target Ø50
Pistol (Yellow)
Art nr 109733



Hanging Target Ø50
Carbine Rifle (Black)
Art nr 501051



Hanging Target Ø80
Pistol (Yellow)
art nr 109735



Hanging Target Ø80
Carbine Rifle (Black)
Art nr 501052



Hanging Target Ø100

Pistol (Yellow)
Art nr 109732



Hanging Target Ø100

Carbine Rifle (Black)
Art nr 501053



Hanging Target Ø150

Carbine Rifle (Black)
Art nr 501054



Hanging Target Ø150

Pistol (Yellow)
Art nr 109728





OUTDOOR TARGETS

The outdoor targets are modular, durable, and recyclable.



Auto-Popper, Ø200
Pistol
Art nr 104232



Auto-Popper, Ø300
Pistol
Art nr 103320



Auto-Popper, Ø200
Carbine Rifle
Art nr 500985



**Auto-Popper
Carbine Rifle,
Ø300 mm**
Art nr 501161



**Auto-Popper
Hound, Ø250**
Sniper Target
Art nr 106193

Autoplate, Ø200
Pistol
Art nr 500051



Autoplate, 150x150
Pistol
Art nr 500052

Gong, Ø200,
Carbine Rifle
Art nr 500123



Steel Target, IPSC B-BC zon
Carbine Rifle
Art nr 500976



Steel Target, IPSC Full torso
Carbine Rifle
Art nr 500975



Steel Target, IPSC Classic
Carbine Rifle
Art nr 501050



Modular Target System

The Modular Target System is based on three segments - foot, pole, and target mechanism. The parts can be combined in a wide number of ways, creating many different possibilities for training. No tools are needed for assembly.

The Modular Target System is available for both pistol and carbine rifles.

Steel Target with hostage at shoulder
Art nr 501000



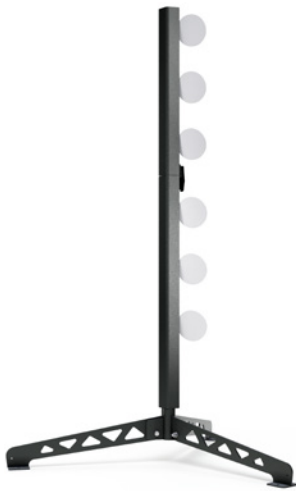
Steel Target, Ø200
Art nr 501043



Steel Target with hostage, Middle
Art nr 501040



Duell Tree
Art nr 501001



Steel Target, IPSC Full torso
Art nr 501042



Steel Target B BC zon
Art 501041



Steel Target Classic Target
Art nr 501064



Paper Targets

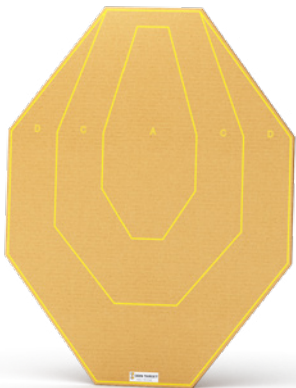
**IPSC-Target,
Full torso,
Long neck**
Yellow print
Art nr 500974



**IPSC-Target,
Full torso,
Short neck**
Yellow print
Art nr 500973



**IPSC-Target,
Classic**
Yellow print
Art nr 501045



**IPSC-Target
Full torso,
Short neck**
Yellow print
Water resistant
Art nr 501024



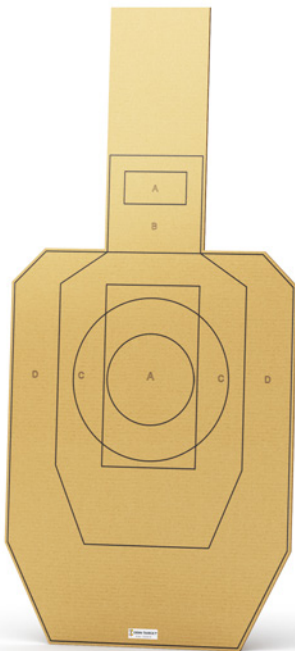
**IPSC-Target,
Full torso,
Long neck**
Black print
Art nr 500993



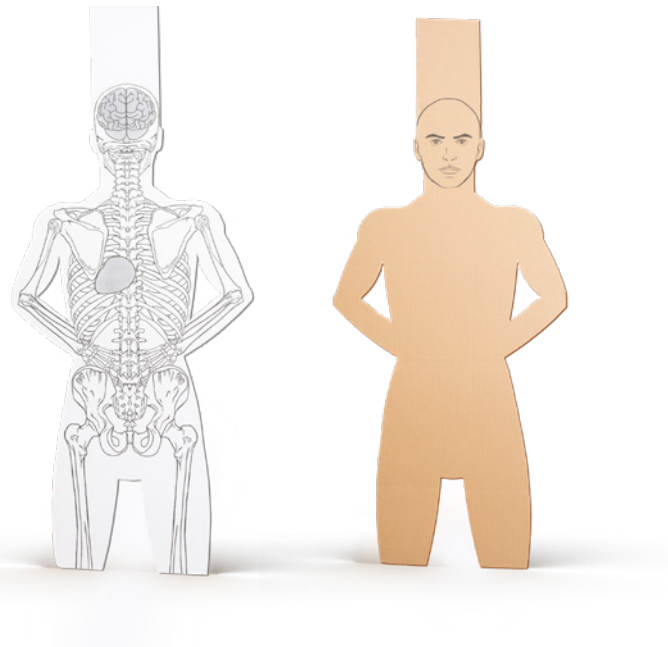
**IPSC-Target,
Full torso,
Short neck**
Black print
Art nr 500992



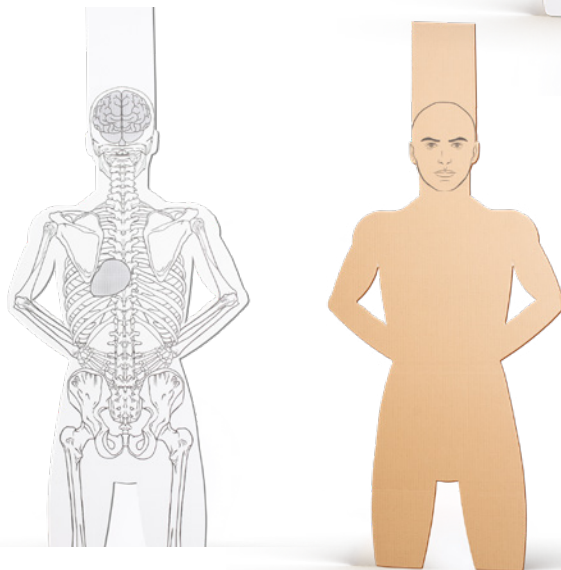
**IPSC-Target,
Full torso,
Long neck**
Black print
Art nr 500993



**Anatomic
Target 3/4**
1 340 mm
Art nr 501396



**Anatomic
Target 3/4**
1 900 mm
Art nr 501328



**Full Torso
Long Neck, Model X**
Art nr 501165



**Blonde Man
Torso Target**
Art nr 501010



**Blonde Man
Full Body Target**
Art nr 501012



**Blonde Woman
Full Body Target**
Art nr 501014



**Blonde Woman
Torso Target**
Art nr 501009



**Brunette Woman
Torso Target**
Art nr 501008



**Brown Haired Man
Full Body Target**
Art nr 501013



**Brown Haired Man
Torso Target**
Art nr 501011



**Brunette Woman
Full Body Target**
Art nr 501015

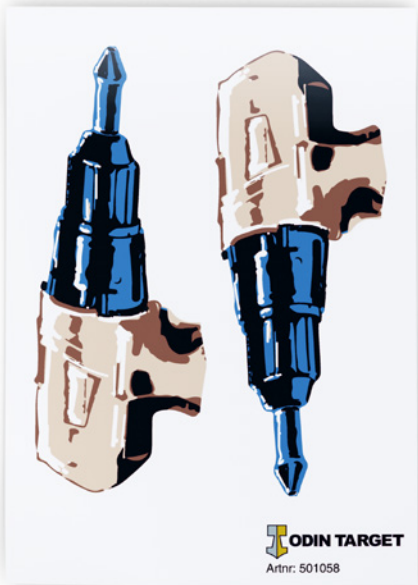


**Competency
Testing Target**
Art nr 501436



Motive stickers

Motive Sticker
Knife
Art nr 501063



Motive Sticker
Screwdriver
Art nr 501058



Motive sticker
Carbine Rifle
Art nr 501060

Motive sticker
Gun
Art nr 501061



Motive sticker
Coffeecup
Art nr 501062



Motive Sticker
Hair Dryer
Art nr 501059



Cover tape,
19 mm
Art nr 501022



Cover tape,
38 mm
Art nr 501023



Spray Glue
Art nr 501297

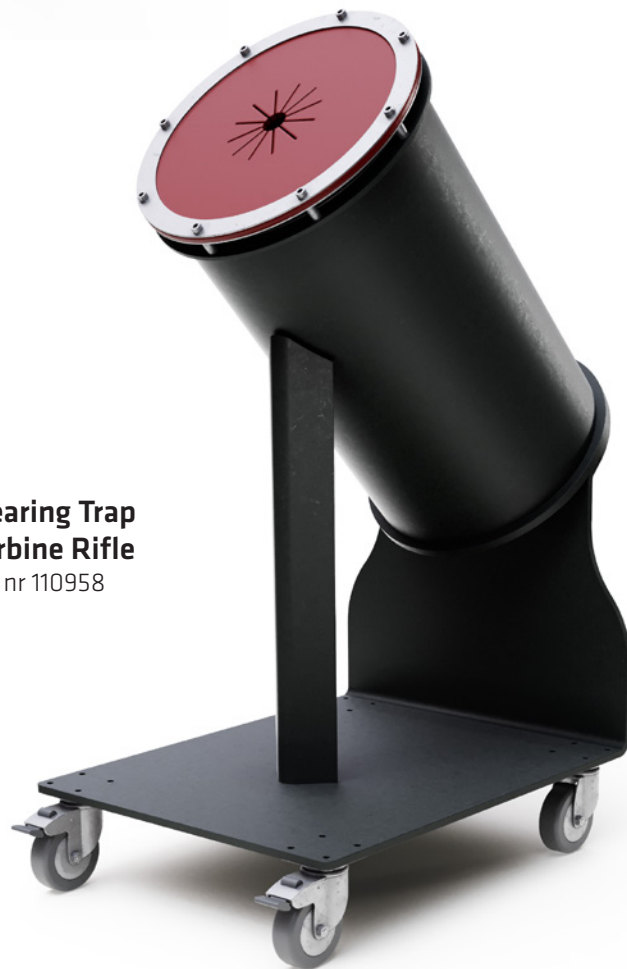


We have
more articles
on our website
odintarget.com

Clearing Trap



**Clearing Trap
Pistol**
Art nr 108656



**Clearing Trap
Carbine Rifle**
Art nr 110958





A few words with our founder and CEO Peter Norman

What did you do before you started Odin Target?

– I started out as an engineer and worked for the Scania Group for almost 20 years, where I held senior positions in production and sales. I was also involved in forming the new company Ferruform AB, which was owned by Scania and became a subcontractor to the transportation-vehicle industry in Europe. I was CEO there for five years and at our peak, I had about 1000 employees in the organization.

Why did you start Odin Target?

– I've always been interested in new solutions for weapons handling and the training of military and police authorities. Since I have a background in industries that focus on "high-performance steel", we have had the opportunity to develop many new products that were previously considered technologically impossible. Making the impossible possible is always an exciting process.

You have ongoing cooperation with the special forces within the Swedish military and police authorities. Why is that an important part of how Odin Target develops its products?

– If you want to develop the best products, you should work with the most demanding customers. When we design new products, we always start out by asking what our clients' needs are and how the product is going to be used. The specialized units have the highest standards, and we work closely with them so that we can create products that meet their demands. Our cooperation with the special forces has been very important for our development and they are still some of our most valued customers.

You have just developed three new target systems. What does the future hold and what can we expect from Odin Target in the coming years?

– Today we invest 20% of our revenue on product development. This ensures that we can constantly develop new products and solutions. If we take Sleipner as an example, the development of that target system began as a request from the Swedish military special forces. They needed a moving target for outdoor use that wouldn't be affected by bad weather conditions and could be used over long periods of time without maintenance. They were not happy with the existing target systems on the market, so we developed a new system that met all their requirements and expectations. And that's how we will continue to work in the future. We are constantly looking ahead and seeing how we can meet our customers' demands. That is also what gives us an edge over our competitors.

Odin Target has increased its presence on the global market, what are your plans for the future?

– Sweden will always be our home, but as we keep growing, we're also looking to establish ourselves in the international market. We now have a manufacturing partner in Canada, and we also have sales representatives in Poland, The United States, Canada, and the Middle East. I know from experience that it pays to invest in great people on your team and our organization is stronger now than it has ever been.

Warranty and Service Agreements

Warranty

All Odin Target product includes a limited 5-year warranty as standard. Terms and conditions are agreed upon between Odin Target and the client.

The response time for warranty repairs and downtime is a maximum of 48 hours from that we receive a written report.

A consignment stock of strategic components for carbon capture and target systems is stored in your facility during the warranty period. Consumables can also be included.

Training

Training of instructors in handling the target system and Bullet trap is performed in consultation with the customer and is performed when the systems have been fully controlled and tested. Briefing and training of the regular staff at the shooting range are done when the final documentation for the facility is delivered. The training concerns target system, bullet trap functions, and maintenance issues.

Documentation, consumables, and spare parts

Complete and updated documentation will be provided after the plant is installed and approved.

A list of article numbers and names of suitable spare parts and consumables will also be provided.

CE approval

All parts that are affected by the Machinery Directive will be CE marked, the parts that are relevant are Loke 180 turning target, Running Man running target, and fragment conveyor if the option is purchased.

ISO Certified

Odin Target is certified in accordance with The International Organization for Standardization. We are certified for both Quality management systems (ISO 9001) and Environmental management systems (ISO 14001).



ODIN TARGET

Shooting Range Technology since 1917

Head Office, Sales and Showroom

Järfällavägen 104 | 177 41 Järfälla, Sweden

Development, Procurement and Administration

Lulsundsgatan 16 | 972 41 Luleå, Sweden

www.odintarget.com